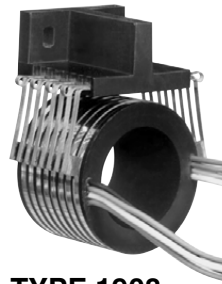
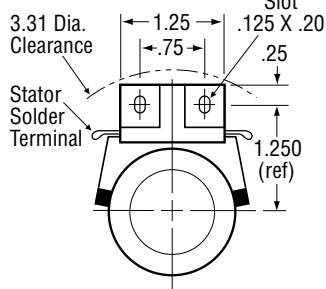
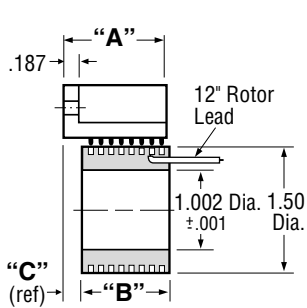


BEST COST • 1.002 INCH BORE • STOCK DELIVERY

STANDARD BRUSH BLOCK

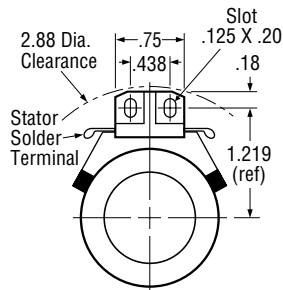
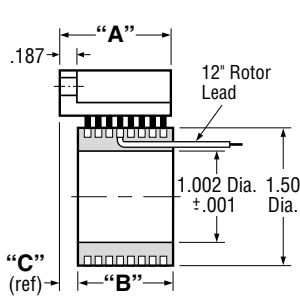


TYPE 1908

P/N 1908-2BR-FAG180 pictured.

| TYPE | No. of Rings | Length "A" Inches | Length "B" Inches | Length "C" Inches |
|-------|--------------|-------------------|-------------------|-------------------|
| 1201 | 2 | .75 | .56 | .230 |
| 1401 | 4 | | | |
| 1905 | 5 | .87 | .70 | .200 |
| 1906 | 6 | .99 | .82 | .200 |
| 1907 | 7 | 1.11 | .94 | .200 |
| 1908 | 8 | 1.23 | 1.06 | .200 |
| 1909 | 9 | 1.35 | 1.18 | .200 |
| 19010 | 10 | 1.47 | 1.30 | .200 |
| 19012 | 12 | 1.71 | 1.54 | .200 |
| 19014 | 14 | 1.95 | 1.78 | .200 |
| 19016 | 16 | 2.19 | 2.02 | .200 |

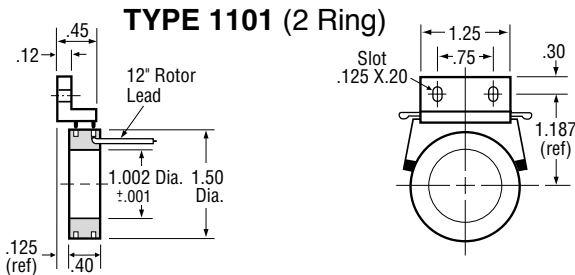
REDUCED CLEARANCE BRUSH BLOCK



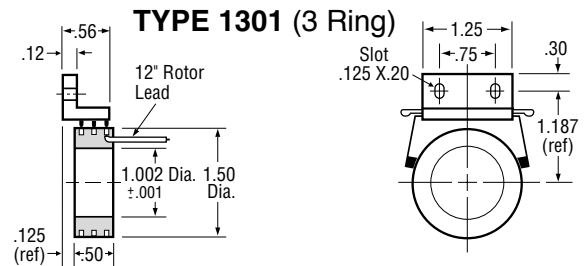
TYPE 1908 RC

P/N 1908RC-2BR-FAG180 pictured.

| TYPE | No. of Rings | Length "A" Inches | Length "B" Inches | Length "C" Inches |
|---------|--------------|-------------------|-------------------|-------------------|
| 1201RC | 2 | .75 | .56 | .230 |
| 1401RC | 4 | | | |
| 1905RC | 5 | .87 | .70 | .200 |
| 1906RC | 6 | .99 | .82 | .200 |
| 1907RC | 7 | 1.11 | .94 | .200 |
| 1908RC | 8 | 1.23 | 1.06 | .200 |
| 1909RC | 9 | 1.35 | 1.18 | .200 |
| 19010RC | 10 | 1.47 | 1.30 | .200 |
| 19012RC | 12 | 1.71 | 1.54 | .200 |
| 19014RC | 14 | 1.95 | 1.78 | .200 |
| 19016RC | 16 | 2.19 | 2.02 | .200 |



TYPE 1101 (2 Ring)



TYPE 1301 (3 Ring)

CHARACTERISTICS

CURRENT: • 5 amp standard.
• 10 amp optional.

RINGS: • Solid Coin Silver Rings.

BRUSHES: • Silver Graphite.
• Fabricast Grade FAG 180 (80% Ag – 20% C).
• 5 amp capacity with 2 brushes per ring (1 brush block).
• 10 amp capacity with 4 brushes per ring (2 brush blocks).
• Brush complement molded as unit with diallyl phthalate dielectric.

NOISE: • 10 Milliohms maximum dynamic resistance with 2 brushes per ring.
• 5 Milliohms maximum dynamic resistance with 4 brushes per ring.

HI-POT: • 1000 VAC for 15 seconds.

ROTOR: • Ring complement molded as unit with diallyl phthalate dielectric.

ROTOR LEADS: • 5 amp leads – 20 AWG per MIL-W-16878 Type "E".
• 10 amp leads – 16 AWG per MIL-W-16878 Type "E".

OPTIONS: • 10 amp current carrying capacity.

• Hard vacuum compatible.
• Consult Fabricast for all available options.

* Consult Fabricast for optional brush grades and characteristics (see page 14).

COMPLETE ASSEMBLY PART NUMBER CODING – Specify fully when ordering:

| | | | |
|------|------------------|-------------|------------------------|
| | Number of | Brush Grade | Options |
| Type | Brushes per Ring | Number | (If Applicable) |
| X | X | X | X |
| | (2BR or 4BR) | *(FAG180) | (10 amp, Vacuum, etc.) |

For additional ordering information see page 11.

For Mounting and Wiring Methods, RPM Range, and Operating Environment see pages 9 & 10.

Fabricast, Inc.® MANUFACTURER OF SLIP RING ASSEMBLIES

TELEPHONE: (626) 443-3247
FAX: (626) 443-5594
E-MAIL: info@fabricast.com
WEB SITE: www.fabricast.com